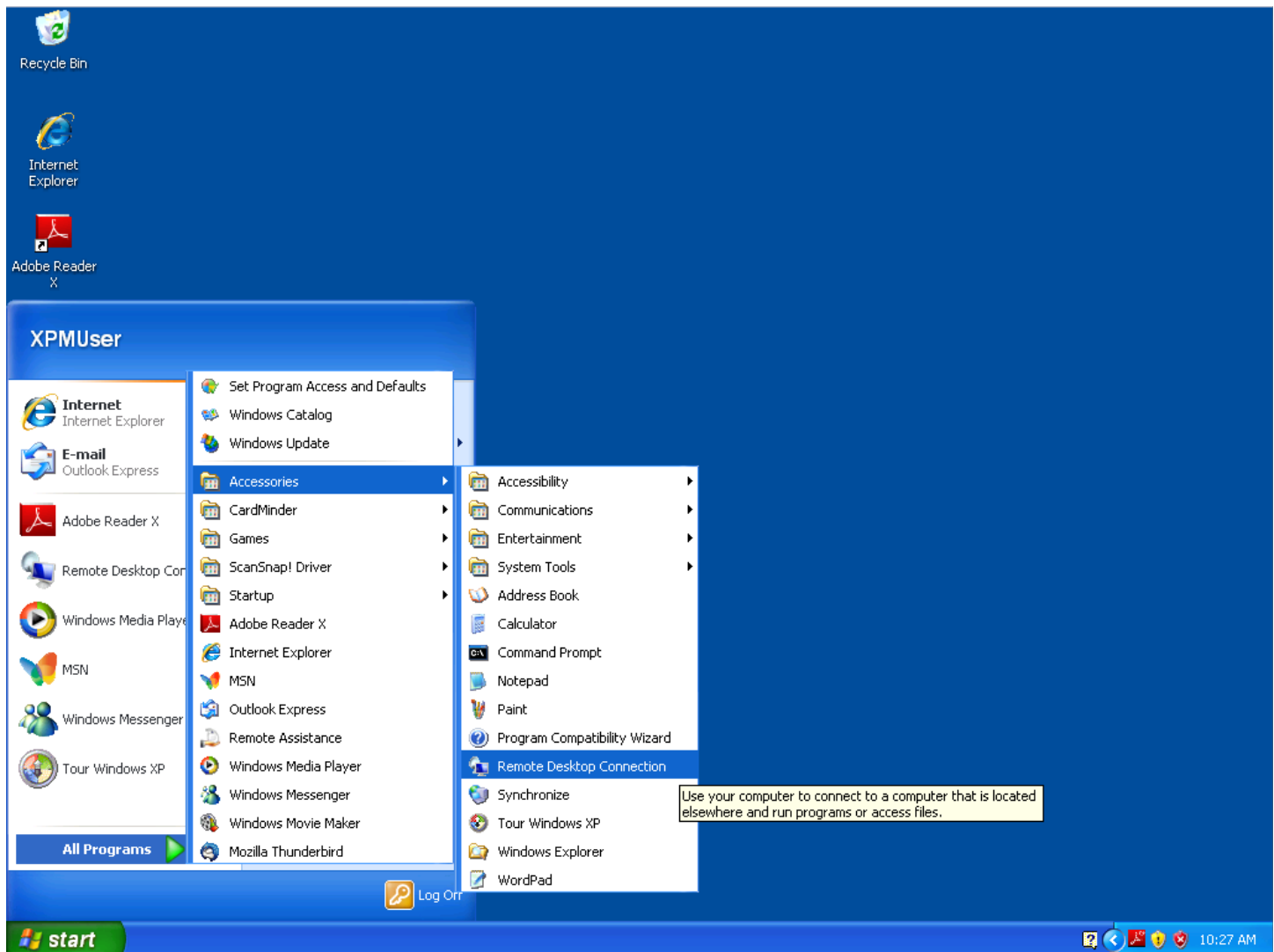


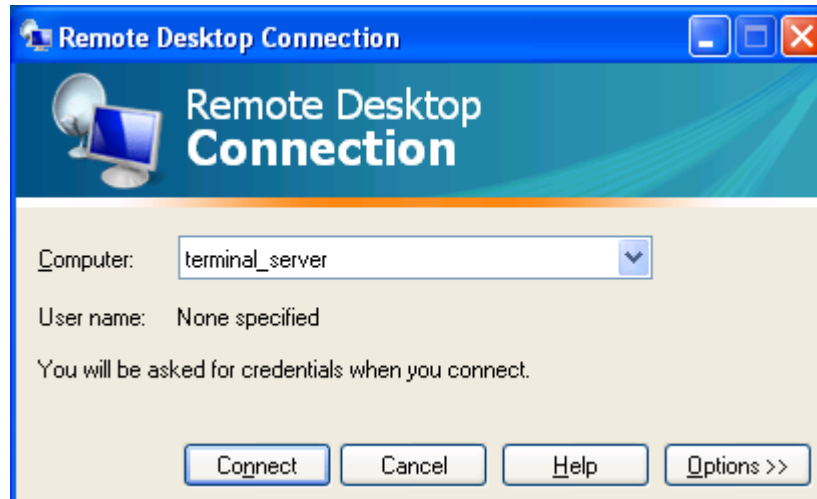
## Windows XP:

To log into terminal server using **Windows XP** operating system, follow the instructions below.

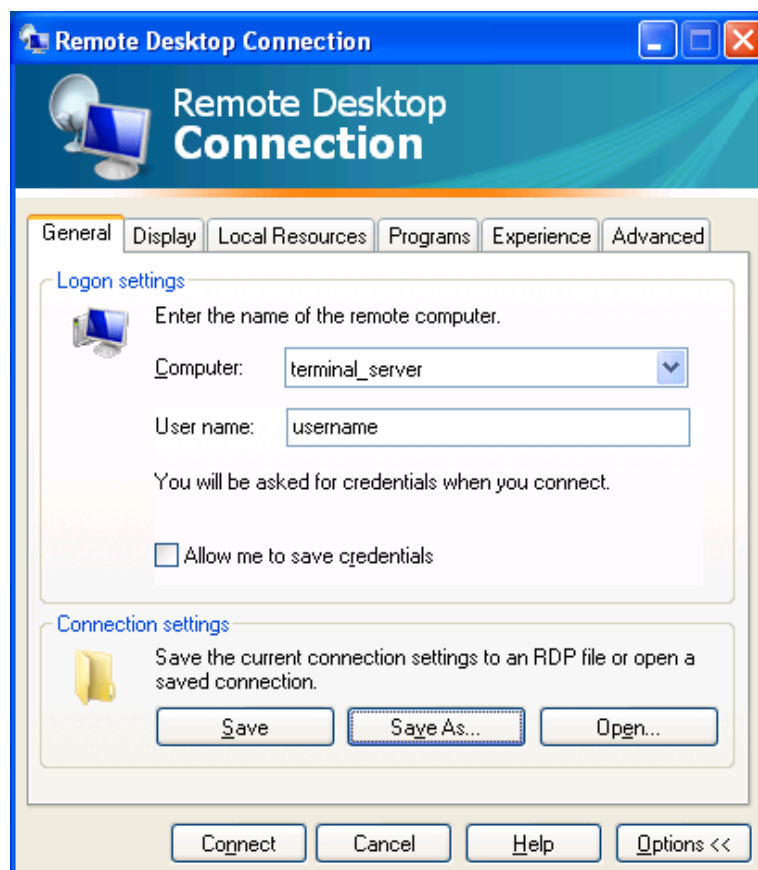
- Click "Start", then "All Programs", then "Accessories", and click "Remote Desktop Connection"



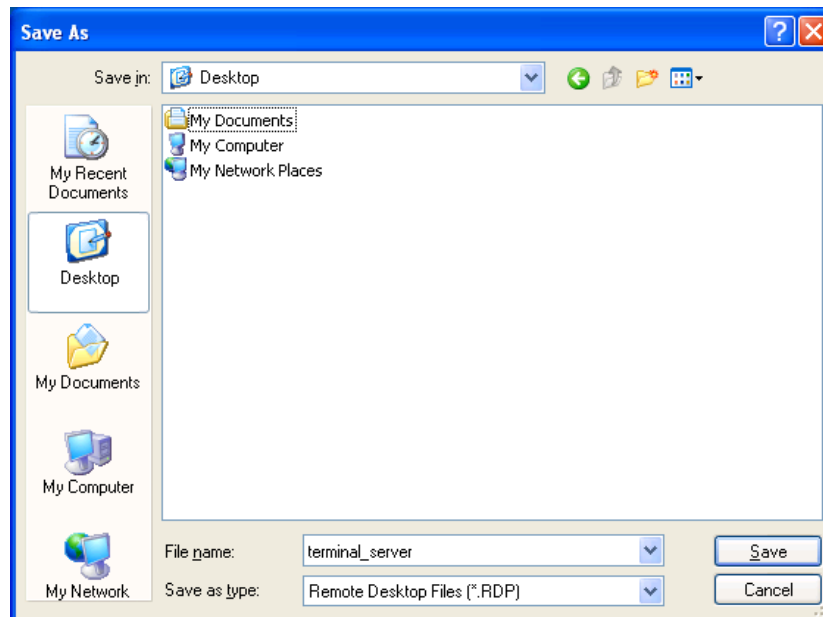
- In the text box across from "Computer:", type in "terminal\_server", where "terminal\_server" is the name or IP of the server you are trying to log into.



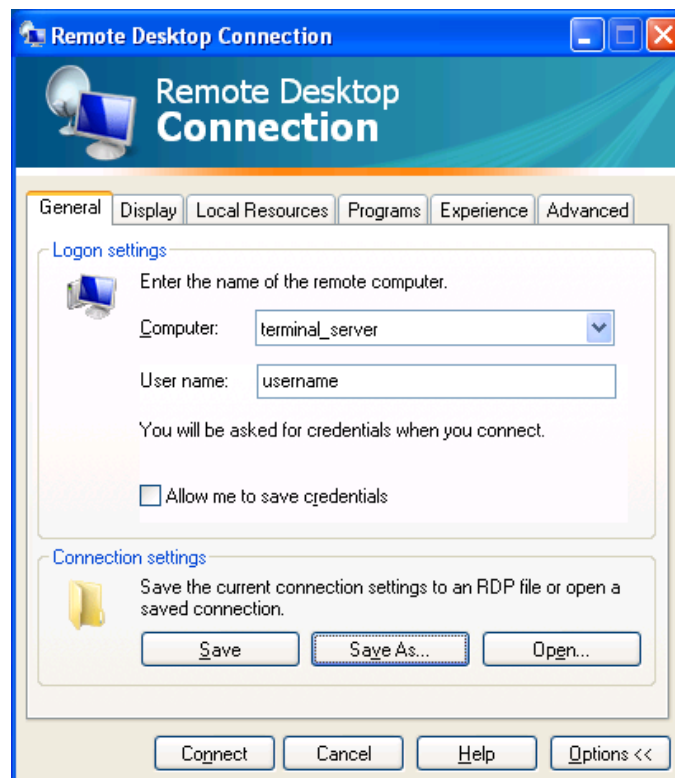
- To save your user name so you don't have to type it in every time, click "Options", on the "General" tab, type in your user name, then click "Save As"



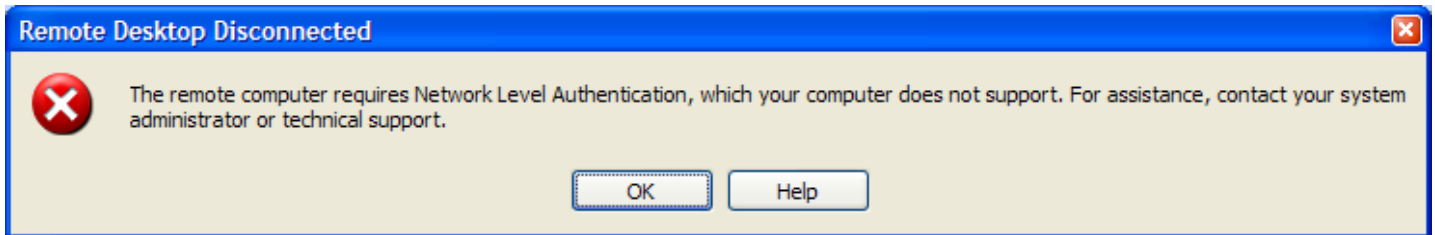
- Select "Desktop", then at the bottom across from "File name:" in the box type in "terminal\_server", and click "Save"



- This placed the "terminal\_server" remote login icon on your desktop. Click "Connect".



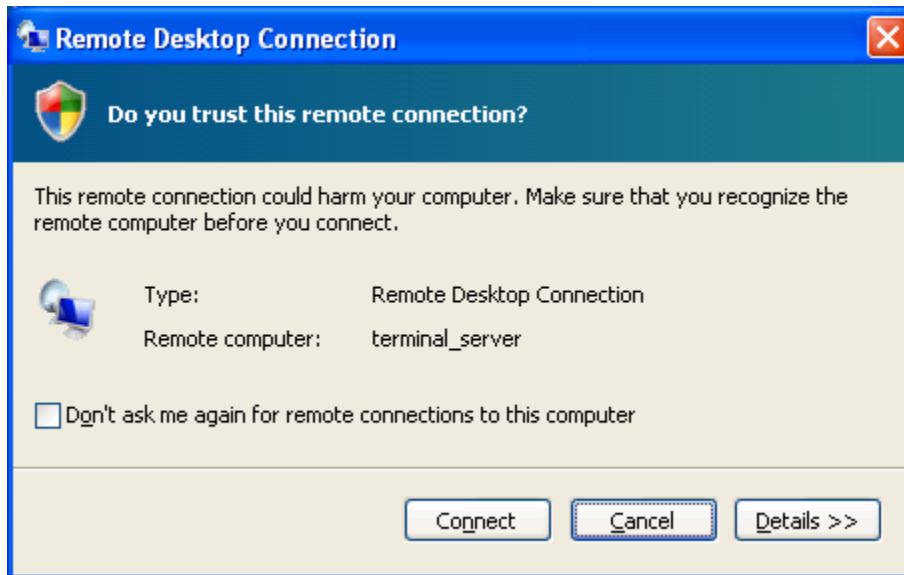
- If you get this message box, please contact Unique Computing Solutions for help resolving the issue at 708-922-9444 or email <http://www.uniquecomputingsolutions.com/contactus.asp>.



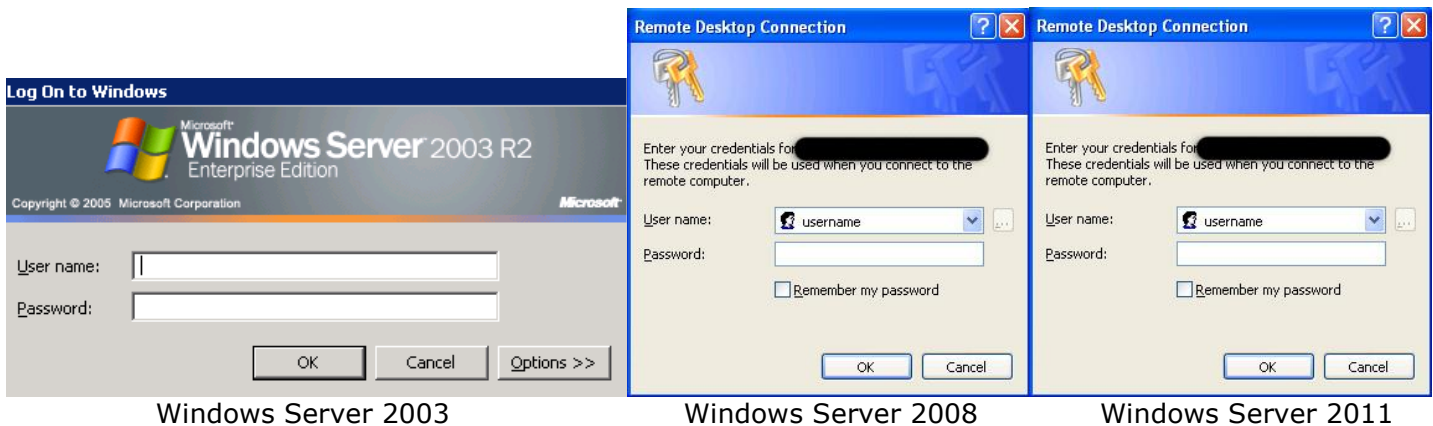
Alternatively, here is a list of steps that can be used to resolve the issue:

- When connecting to a Windows 2008 Server using remote desktop from a Windows XP client running service pack 2 or earlier, you get the following error message:
- The remote computer requires Network Level Authentication, which your computer does not support.
- To enable NLA in XP machines; first install XP SP3, then edit the registry settings on the XP client machine to allow NLA
- Configure Network Level Authentication:
  1. Click Start, click Run, type regedit, and then press ENTER.
  2. In the navigation pane, locate and then click the following registry subkey: HKEY\_LOCAL\_MACHINE\SYSTEM\CurrentControlSet\Control\Lsa
  3. In the details pane, right-click Security Packages, and then click Modify.
  4. In the Value data box, type tspkg. Leave any data that is specific to other SSPs, and then click OK.
  5. In the navigation pane, locate and then click the following registry subkey: HKEY\_LOCAL\_MACHINE\SYSTEM\CurrentControlSet\Control\SecurityProviders
  6. In the details pane, right-click SecurityProviders, and then click Modify.
  7. In the Value data box, type credssp.dll. Leave any data that is specific to other SSPs, and then click OK.
  8. Exit Registry Editor.
  9. Restart the computer.

- If you are prompted with this window, put a checkmark in the box next to "Don't ask me again for remote connections to this computer" and click "Connect"



- Depending on the type of server you are trying to log into, you will get different log-in prompts. Type in your password and click "OK" (your user name would already be filled in)



Windows Server 2003

Windows Server 2008

Windows Server 2011

- Enter your password (your username would be already filled in), and click "OK" to log in.
- When you see your terminal server desktop, you have arrived at the terminal server.